

## Flexy Compact

### Refrigerated well on cupboard with refrigerated display, compact (2GN) with overshelf with LED light

ITEM # \_\_\_\_\_

MODEL # \_\_\_\_\_

NAME # \_\_\_\_\_

SIS # \_\_\_\_\_

AIA # \_\_\_\_\_



322099 (F19C2AF00W)

Refrigerated well on cupboard with refrigerated display, compact (2 GN container capacity) with overshelf with LED lights and one stainless steel tubular tray slider on customer side H=900mm

### Short Form Specification

#### Item No. \_\_\_\_\_

Compact design, ideal for space saving environments. Stainless steel tubular tray slider on customer side. Unit mounted on 150 mm high feet. Soft closing doors on operator side. Underneath ambient cupboard with doors. Sturdy body construction with laminated panelings on 4 sides. Designed to serve: Plates on the shelves and food in GN containers or food on plates/packages or bottles and cans thanks to adjustable bottom well. Suitable for GN 1/1 containers with a maximum height of 200 mm. Food introduced at the correct temperature maintains its core temperature according to Afnor Standards. Automatic defrosting guarantees evaporators clearance and efficient well cooling. Digital control with temperature display with precise adjustment (0,1°C). Fully compliant HACCP digital controls include visible alarms. The unit is composed of two refrigeration systems: a static cooled well on the bottom and evaporator with fan on the top. Short sides and the top are in double glazed low emission glass (18 mm thick) to improve insulation avoiding formation of the condensation and reducing energy consumption. The display is illuminated by inside LED light under each glass shelf that emphasizes the cold food colors. The temperature uniformity is guaranteed by fans and an high surface evaporator placed at the top of the unit. Plexiglass display case with lift-up doors on both sides to ensure maximum

hygiene of the food. Includes 2 adjustable shelves composed of two grids each. The shelves can be adjusted in height to allocate different items. Wells in 304 AISI stainless steel with rounded corners to facilitate cleaning operations. The well is also equipped with a drain hole. High-density expanded polyurethane foam with cyclopentane guarantees excellent well insulation to reduce energy dispersion. R290 refrigerant gas (GWP=3) to reduce environmental impact and increase cooling efficiency. 900mm worktop height.

APPROVAL: \_\_\_\_\_

## Main Features

- Precise temperature control and setting at 0,1°C .
- As standard the product comes with digitally controlled thermostat which is in line of HACCP norms and provides visual alarm as a warning of the increasing or decreasing temperatures.
- Food introduced at the correct temperature maintains its core temperature according to Afnor Standards.
- Automatic defrosting guarantees evaporators clearance and efficient well cooling.
- Suitable for GN 1/1 containers with a maximum height of 200 mm.
- The unit is composed of two refrigeration systems: a static cooled well on the bottom and evaporator with fan on the top.
- Bottom well is designed to serve the food in GN containers or bottles and cans.
- The display is illuminated by inside LED light under each glass shelf that emphasizes the cold food colors.
- The temperature uniformity is guaranteed by fans and an high surface evaporator placed at the top of the unit.
- The configuration allows a compact footprint and excellent preservation performances.
- Plexiglass display case with lift-up doors on both sides to ensure maximum hygiene of the food.
- Includes 2 adjustable shelves composed of two grids each. The shelves can be adjusted in height to allocate different items.
- CB and CE certified by a third party notified body.
- Tray slider in tubular stainless steel is installed on the customer side and it can also be folded down to facilitate passage of the units through doorways.
- Ideal for servery lines with an operator.
- Unit mounted on 150 mm high feet.
- Soft closing doors on operator side.
- Underneath ambient cupboard with doors ideal for extra storage.
- Available options with online configurator: colors, tray sliders, overshelves, feet/wheels with desired diameter, height 750mm for kids.
- Optional plinth can be installed to cover the feet or the wheels.
- Perfect compact design makes it ideal for space saving environments.
- Available dimensions: 2, 3, 4 GN.

## Construction

- Electronic control with temperature display.
- Well bottom is inclined to facilitate water drainage.
- Well in 304 AISI stainless steel with rounded corners to facilitate cleaning operations. The well is also equipped with a drain hole.
- IPx2 water protection.
- Overshelf in complete AISI 304.
- Top in AISI 304.
- Sturdy construction with laminated panelings on 4 sides.

## Sustainability



- Hydrocarbon refrigerant gas R290 for the lowest environmental impact (GWP=3) - CFC and HCFC free.
- High-density expanded polyurethane foam with cyclopentane guarantees excellent well insulation to reduce energy dispersion.



**Electrolux**  
PROFESSIONAL

**Flexy Compact**  
**Refrigerated well on cupboard with**  
**refrigerated display, compact (2GN) with**  
**overshelf with LED light**

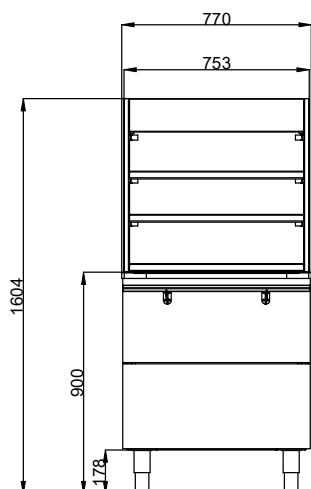
- Short sides and the top are in double glazed low emission glass (18 mm thick) to improve insulation avoiding formation of the condensation and reducing energy consumption.



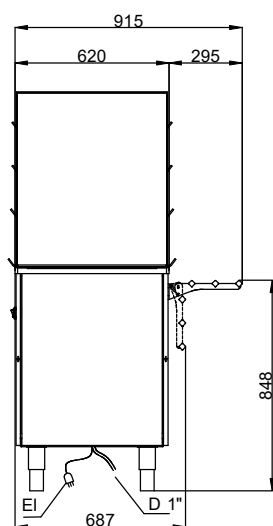
**Flexy Compact**  
**Refrigerated well on cupboard with refrigerated display, compact (2GN)**  
**with overshelf with LED light**  
The company reserves the right to make modifications to the products  
without prior notice. All information correct at time of printing.

2025.07.01

Front

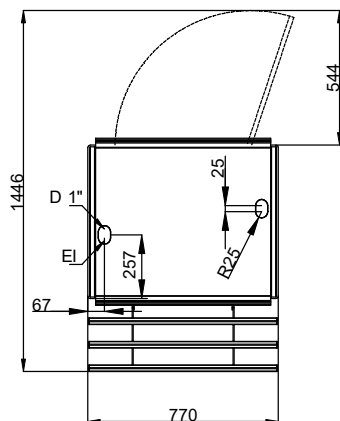


Side



EI = Electrical inlet (power)

Top





**Electrolux**  
PROFESSIONAL

**Flexy Compact**  
Refrigerated well on cupboard with  
refrigerated display, compact (2GN) with  
overshelf with LED light

## Electric

Supply voltage: 220-240 V/1N ph/50 Hz  
Electrical power, max: 0.5 kW

## Key Information:

N° of doors: 1  
External dimensions,  
Width: 770 mm  
External dimensions,  
Depth: 915 mm  
External dimensions,  
Height: 1605 mm  
Shelves number: 2  
Net weight: 180 kg  
Shipping height: 1770 mm  
Shipping width: 830 mm  
Shipping depth: 900 mm  
Shipping volume: 1.32 m<sup>3</sup>  
Set temperature: -10 / 0 °C  
Height adjustment: -20/40 mm  
Top temperature: -10 / 0 °C

## Sustainability

Noise level: 64 dBA  
Refrigerant type:



**Flexy Compact**  
Refrigerated well on cupboard with refrigerated display, compact (2GN)  
with overshelf with LED light  
The company reserves the right to make modifications to the products  
without prior notice. All information correct at time of printing.

2025.07.01